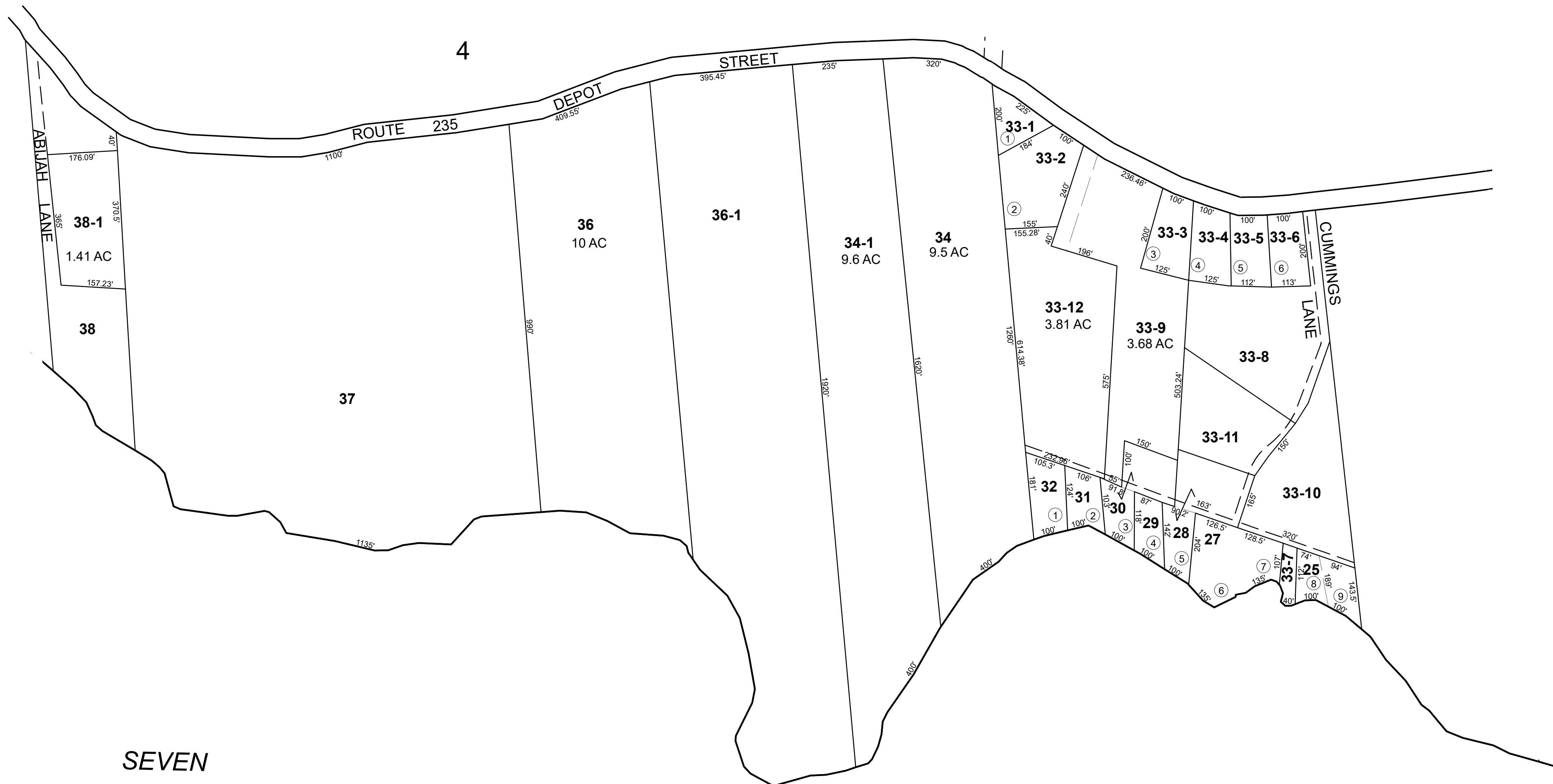


W  
A  
R  
R  
E  
N

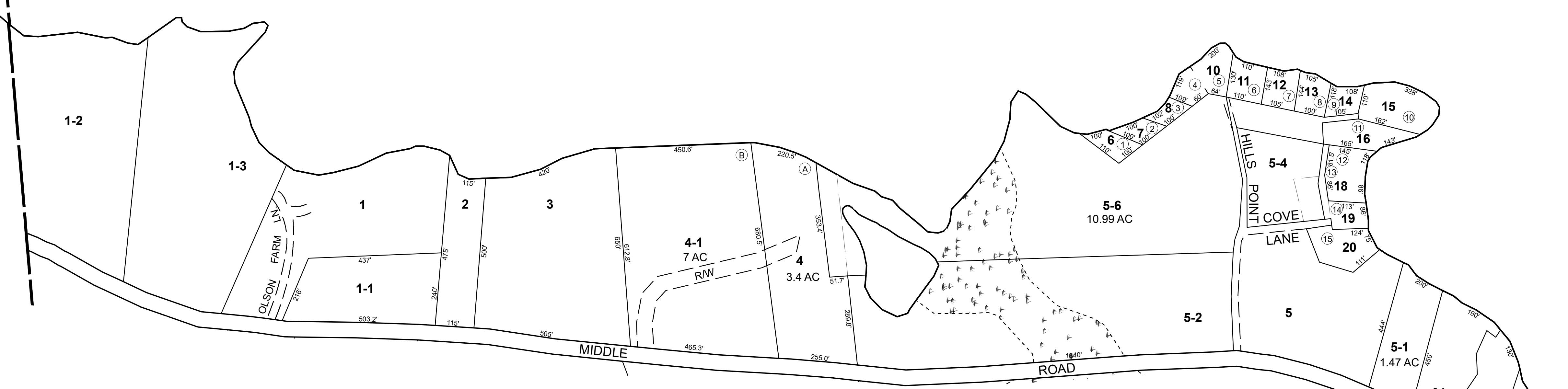


SEVEN

TREE

POND

5



SEVEN

TREE

POND

2

revised April 1, 1987  
April 1, 1989  
April 1, 1990  
April 1, 1992  
April 1, 1993  
April 1, 1996

NO PARCEL 26,36

THIS MAP IS FOR ASSESSMENT PURPOSES. IT IS NOT VALID FOR LEGAL DESCRIPTION OR CONVEYANCE.  
THE HORIZONTAL DATUM IS THE MAINE STATE PLANE COORDINATE SYSTEM, NAD 83.  
ORIGINAL MAPPING BY JAMES W. SEWALL COMPANY OLD TOWN, MAINE.

REVISED & REPRINTED BY  
**CAI Technologies**  
Precision Mapping, Geospatial Solutions.  
11 Pleasant Street, Littleton, NH 03561  
800.322.4540 - www.cai-tech.com

**LEGEND**  
AREA ..... Ac  
RECORD DIMENSION ..... 100'  
SCALED DIMENSION ..... 100'S  
MATCH LINE ..... M.L.  
WATER ..... -W-  
SUBDIVISION LOT NO. ..... ②  
RIGHT OF WAY/ACCESS ..... R/W  
COMMON OWNERSHIP ..... OR  
WETLANDS ..... W

SCALE: 1" = 200'  
FEET 200 100 0 200 400 600  
METERS 50 25 0 50 100 150  
REVISED TO: APRIL 1, 2022

PROPERTY MAPS  
**UNION**  
MAINE

MAP NO.  
**30**