



TOWN OF UNION *Maine*

The first three weeks of March were relatively quiet on the weather front. With seasonably warm temperatures and more than average rainfall, we spent the first two weeks battling an early mud season on the gravel roads. We added over 400 yards of crushed stone and gravel to the worst spots. Almost every gravel road had at least one bad muddy spot, some had multiple spots. We add the stone to stiffen up the spot and then later cover it with gravel and grade it. While the stone does make the road somewhat rough temporarily, this is the best method to ensure that the roads stay passable, which is important not just for passenger cars but also for public safety if an ambulance or fire truck was needed. Once winter is completely over, we'll start spring grading all the gravel roads.

Four days after the official start of "spring", we had a classic spring storm in which we saw three to four inches of snow followed by some rain, freezing rain and sleet. The department was out for a total of 26 hours between Saturday and Sunday. Then on Monday we started the process of storm clean up, by cutting and chipping up all the trees and limbs that had fallen over the weekend. The clean up took a few days, as we went from road to road.

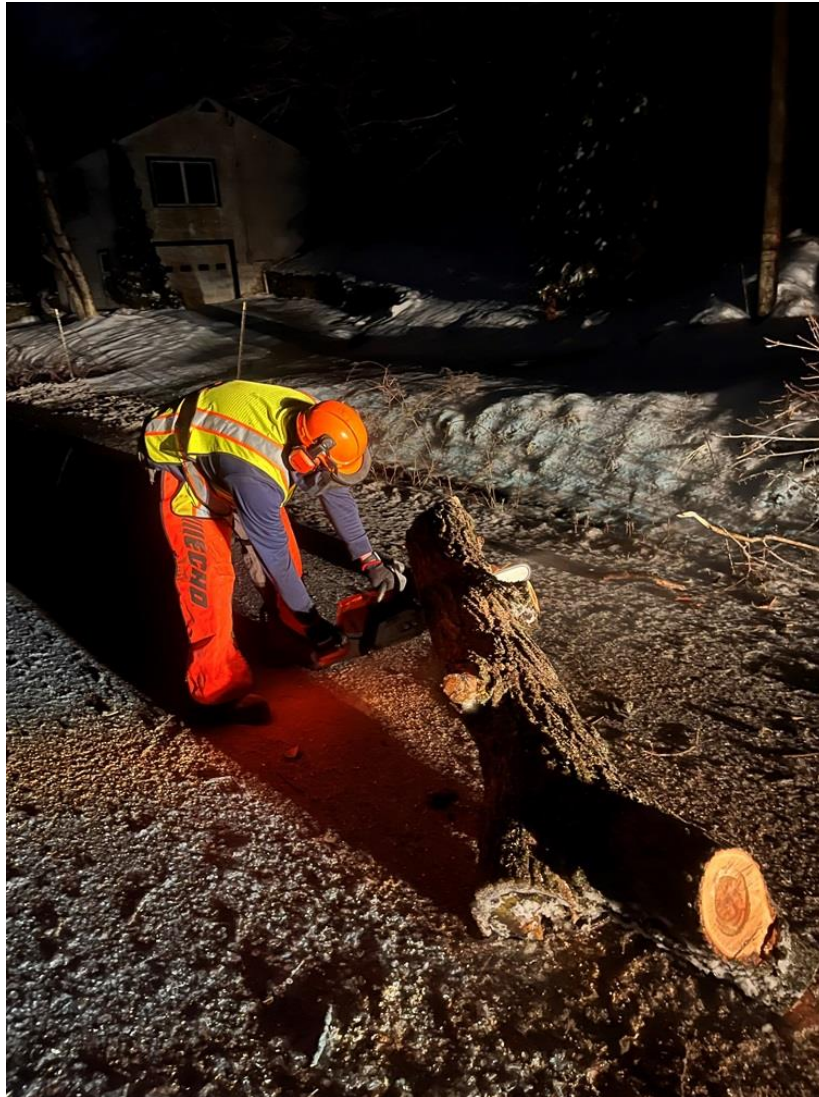
March is also the month when we open Ayer Park for public use. We spent a day cleaning up fallen tree branches, leaves, and pine needles, and the porta potties were freshly serviced by Handy Portable Toilet.

Respectfully submitted,

Matt Elwell - Public Works Director



TOWN OF UNION *Maine*



Matt Elwell cutting up a fallen tree on Depot St during the March ice storm.